



**FAST FACTS:**

-  *Remote image post-processing analysis & reporting services*
-  *Pay-per-use*
-  *Secure cloud-based image transfer, review & editing*
-  *Certified analysts*
-  *24/7 responsive support*
-  *Access to market-leading imaging platforms & software super-users*
-  *HIPAA Compliant, ISO and SOC-2 certified*
-  *Medical Director is Past President of the Society for Cardiovascular MR*

Leave the  
**CT**

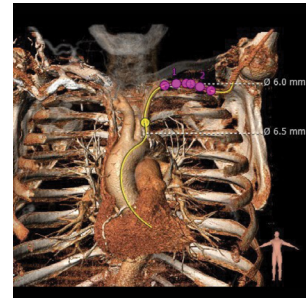
Image Post-Processing Analysis  
*to us!*

**ANALYSES:**

**Left and Right Venticle**

**Coronary CTA Analysis**

- Segmentation of the four main coronary arteries and their sub-branches
- Planar reformations of each vessel
- Measurement of stenosis
- Reformatted double oblique stacks



**Calcium Scoring**

**Skeletal 3D Segmentation**

**Pre TAVR/TAVI Measurements**

- Aortic Root
- Trans-Femoral
- Apical
- Subclavian

**Custom measurement protocols available**

**ABOUT PRECISION IMAGE ANALYSIS (PIA):**

Precision Image Analysis is a world class provider of cloud-based, advanced medical 3D image post-processing and data analysis. PIA serves the global healthcare and research communities through remote image post-processing analysis and reporting services.

The company's solutions offer an excellent opportunity to avoid software and hardware capital expenditures while incorporating advanced image quantification at reduced cost and increased quality with exceptional standardization, reproducibility and turnaround times.