



## FAST FACTS:

-  Remote image post-processing analysis & reporting services
-  Pay-per-use
-  Secure cloud-based image transfer, review & editing
-  Certified analysts
-  24/7 responsive support
-  Access to market-leading imaging platforms & software super-users
-  HIPAA Compliant, ISO and SOC-2 certified
-  Medical Director is Past President of the Society for Cardiovascular MR

Leave the

# CCTA

Image Post-Processing Analysis  
to us!

## ANALYSES:

### Calcium Scoring

- Agatston score and percentile using non-contrast scans

### Segmentation of the four main coronary arteries

- LM, LAD, LCx, RCA as well as their sub-branches

### Planar reformations of each vessel

- Stretched or straightened curve

### Double Oblique Stacks

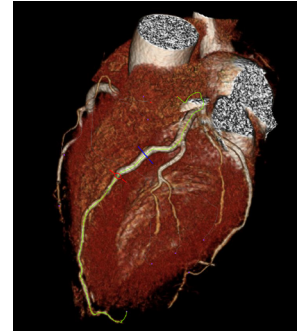
- Reformatted along the AV groove and IVS to visualize main vessel beds

### Measurement of stenosis

- With proximal and distal references and SCCT severity grading for each lesion

### Summary reporting

- Using the SCCT axial coronary segmentation model



## ABOUT PRECISION IMAGE ANALYSIS (PIA):

Precision Image Analysis is a world class provider of cloud-based, advanced medical 3D image post-processing and data analysis. PIA serves the global healthcare and research communities through remote image post-processing analysis and reporting services.

The company's solutions offer an excellent opportunity to avoid software and hardware capital expenditures while incorporating advanced image quantification at reduced cost and increased quality with exceptional standardization, reproducibility and turnaround times.